



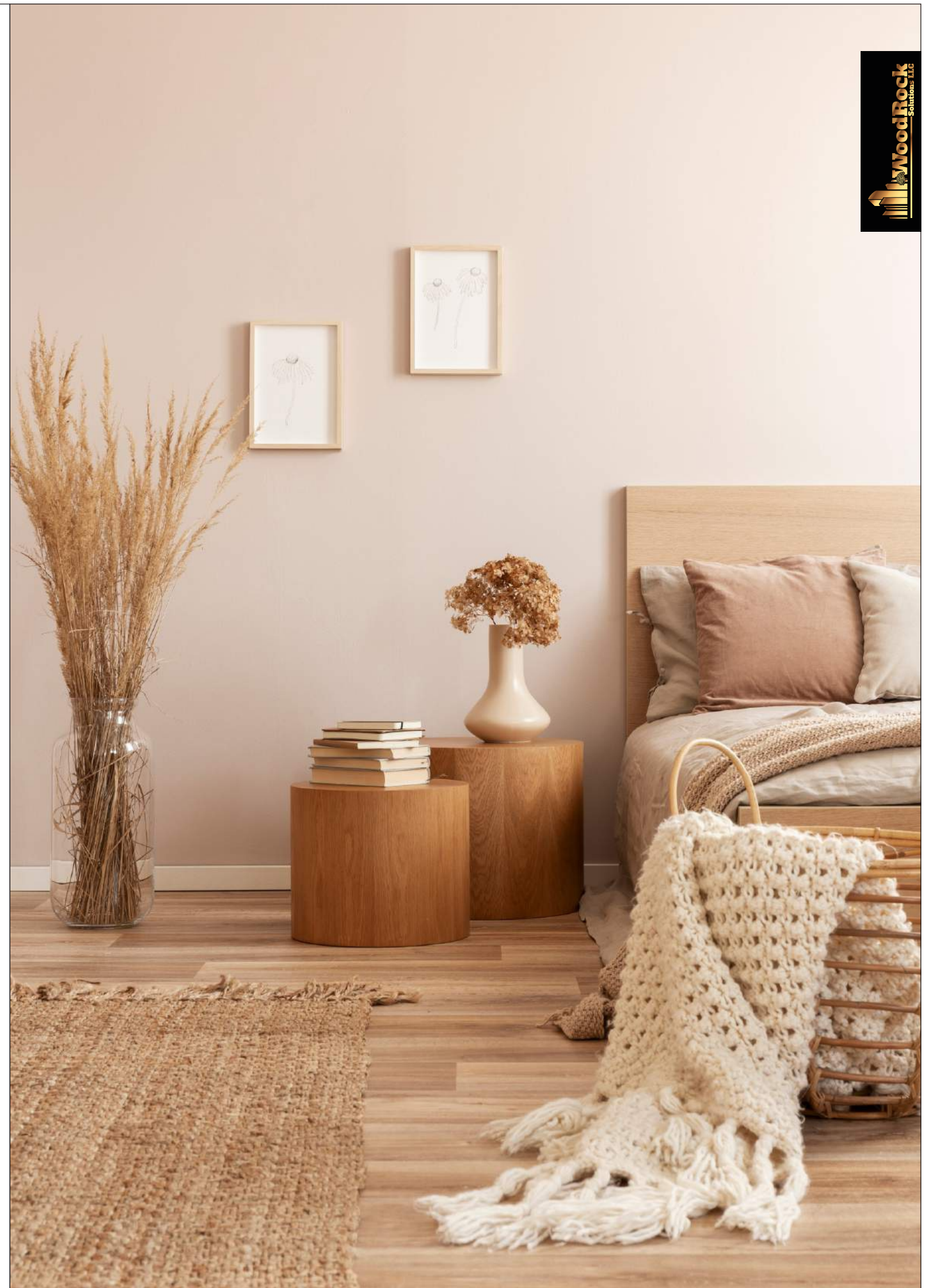
 /woodrock solutions LLC
 /woodrock solutions LLC

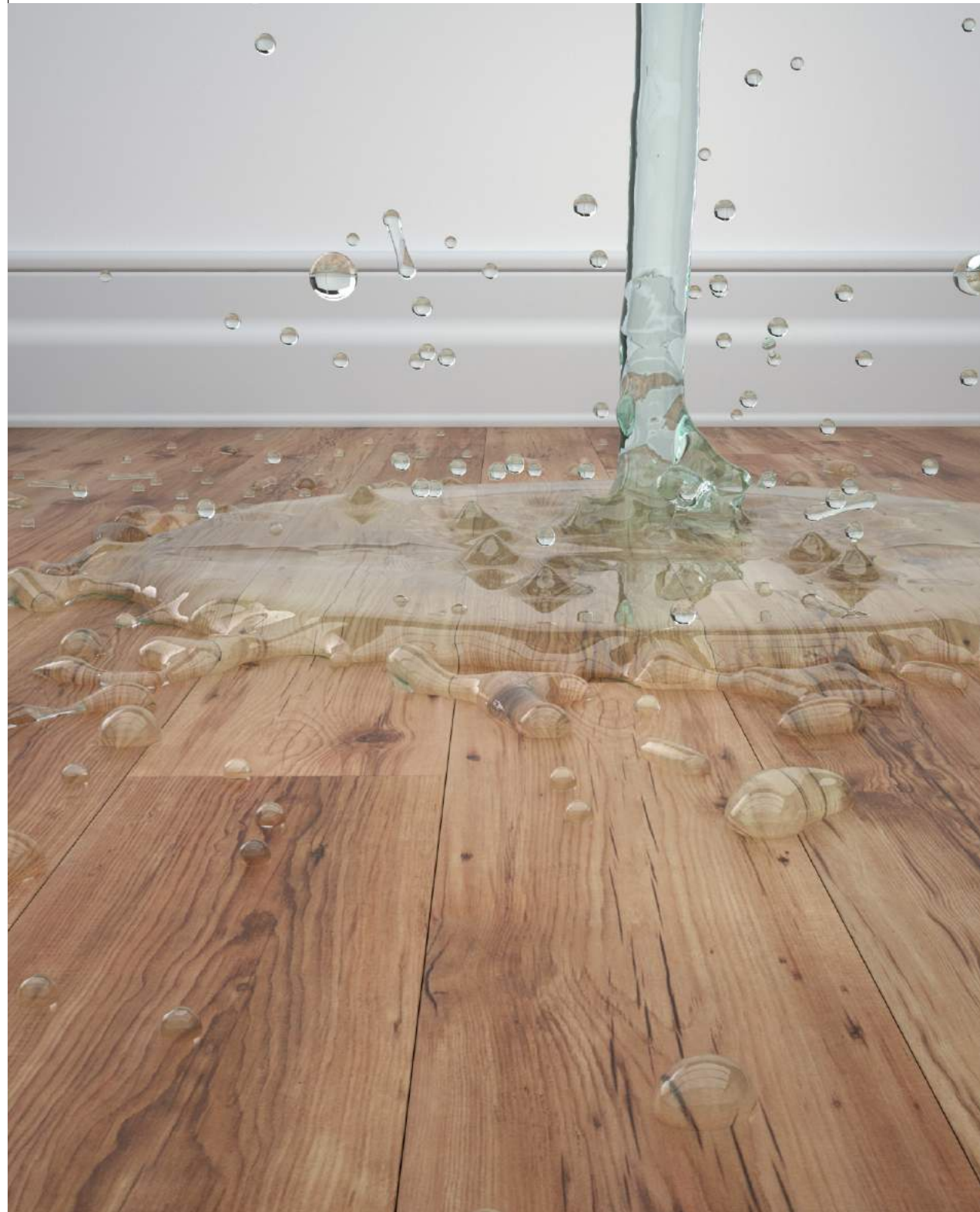
 www.woodrocksolutions.com
 Sales2@woodrocksolutions.com
 (857) 746-2891

What is SPC Flooring?

SPC flooring is considered as the new generation of floor covering. It has 5 layers: UV Coating, Wear layer, Decorative printing layer, SPC core and underlayment layer. The main content of SPC core is natural stone powder, virgin polyvinyl chloride and stabilizer which are mixed up with a certain formula that provides us a very stable composite material. It is an upgrade and improvement of regular luxury vinyl tiles (LVT). For the backing, SPC Flooring can be also with IXPE foam or Cork wood as option to fit all different types of under-floor and providing us excellent walking and impact sound - insulation features.



Advantages of SPC flooring



Waterproof

As the main component of SPC is limestone powder, it performs well with water and mildew does not happen even with high humidity.



Fire proof

SPC VFLOOR flooring has passed CE standard fire - resistant test, the fire rating is BFT - S1. According to the authorities, 95% of the victims were burned in the fire because of the toxic fumes and gases. SPC flooring is flame retardant, not spontaneous combustion, leaves the flame automatic out in 5 seconds, and does not produce toxic and harmful gases.



Formaldehyde free

VFLOOR SPC is of high quality lime stone powder & PVC resin, without harmful material such as benzene, formaldehyde, heavy metals. The final products passed the test from more than 179 different types of hazardous materials, chemicals etc.,



Dimensional stability

SPC flooring is extremely dimensionally stable because of natural contents. Exposed to 80° heat, 6 hours - Shrinkage ≤ 0.1 %; Curling 0.2mm.



Super durable abrasion

SPC flooring has a transparent wear-resistant layer, whose resolution is even higher than 10000 turns if tested as laminate flooring. And testing result of EN660-2:1999+A 1:2003 is Group T, excellent wear-resistance.



Superfine anti-slip class

Safety is one of our major concerns when making flooring. Accordingly, with specially developed structures with an anti-slip class rating, our SPC flooring performs very well to prevent skidding in the damp area.



Easy to install With low requirement of subfloor

The advantages of SPC VFLOOR flooring are easy to install, fast construction, low construction cost, easy to hide imperfections of subfloors thanks to the superior advantage of the rigid core

SPC FLOORING SPECIFICATION

Description	SPC flooring
Physical Properties	Rigid Stone-PVC-Composite vinyl plank
Construction	SPC core (Limestone + Virgin PVC composite, not contain plasticizer, 2000 kgs/m ³ density)
Finish	Deep embossed texture
wear-layer	0.3mm wear-layer for commercial and residential
Profile	Valinger 2G click and Unilin locking system



DETAILED TECHNICAL DATA

Properties	Test Methods	Unit	Test Results		Remarks
Dimensional stability (Expansion or shrinking)	BS EN ISO 23999:2012	%	Manufacturing direction	0.06	Heating temperature: 80°C Heating time: 6h
			Across-manufacturing direction	0.03	
Peel Resistance (top layer)	BS EN ISO 24345:2012	N/50mm	Machine direction	95	Loading rate: 100mm/min
			Across Machine	80	
Residual indentation	ENISO 24343-1:2012	mm	0.05		Pass
Staining and resistance to chemicals	ENISO 26987:2012	/	Not affected		Pass
(0.5mm/20mil) / Wear resistance (0.5mm/ 20mil)	EN 660-2:1999 + A1:2003 and EN649 2011	/	Wear group: T		Pass
Color fastness to light	ENISO 105-B02:2014	/	Grade (BluewoodStd) 6		Meets requirements
Slip resistance	DIN 5 1130:2014-02	/	Critical angle of inclination 12.0°C	R11	Pass
Fire-resistance rate = Bfl-S1	EN ISO 92391	/	Critical flux (kW/ m ²)	,1	Pass
			Smoke (% x minutes)	160	
	EN ISO 11925-2 Exposure = 15s	/	Fs s 150 mm	Yes	Pass

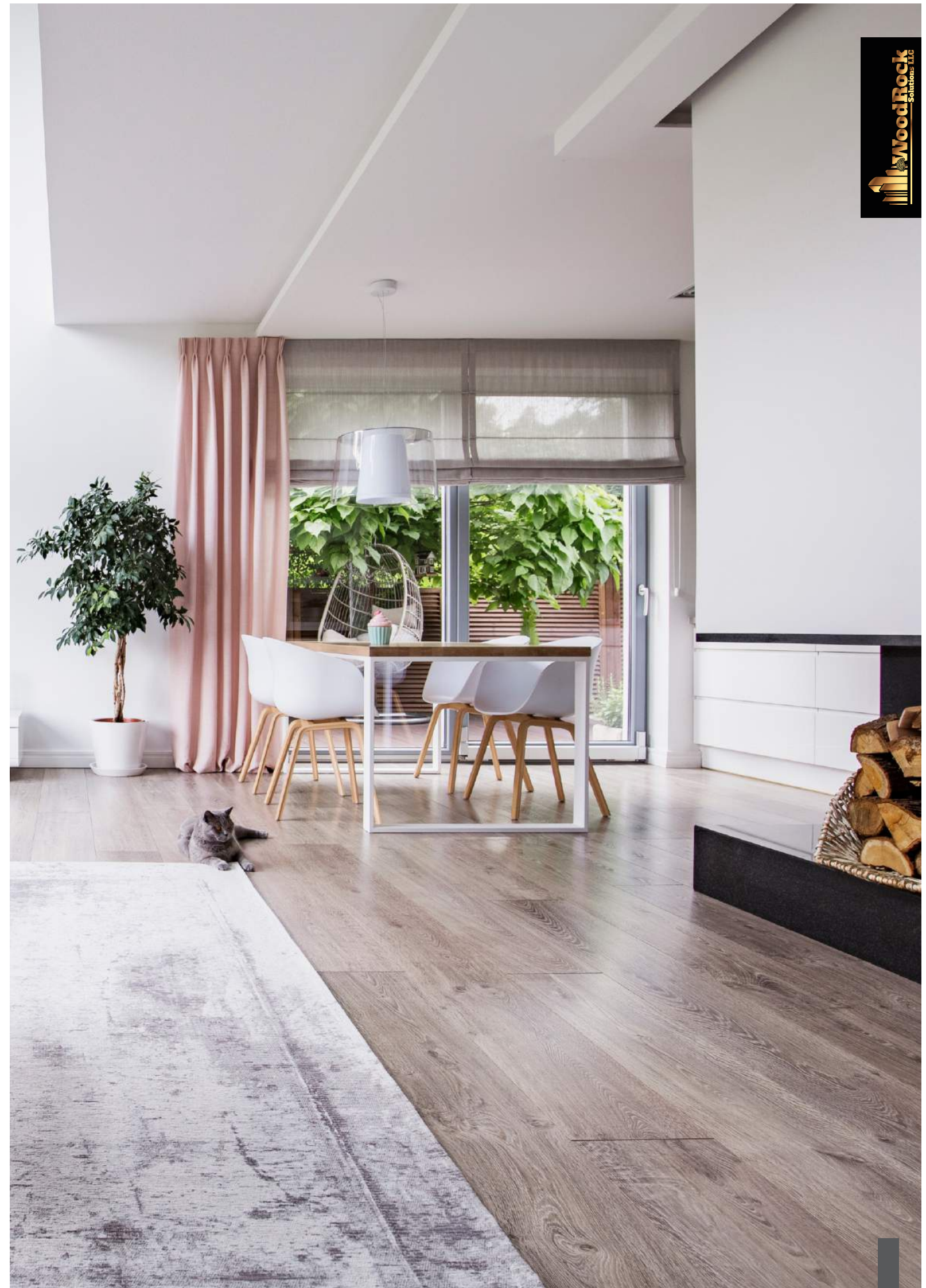


SPC flooring detailed specification

No.	Size	Thickness (mm)	Planks/CTNI	M ² /CTN	CTNs/PLT	Weight/CTN (kgs)	Remarks
01	1220x150mm 48.03"x5.91"	4	12	2.196	72	18.38	Included 1.5mm underlayer
02	1220x150mm 48.03"x5.91"	4	15	2.745	72	22.59	No underlayer
03	122Dx180mm 48.03"x10.9"	4	10	2.196	70	18.65	Included 1.5mm underlayer
04	305x61Dmm 12"x24"	4	12	2.233	72	18.70	Included 1.5mm underlayer
05	122Dx150mm 48.03"x5.91"	5	10	1.830	72	19.07	Included 1.5mm underlayer
06	1220x180mm 48.03"x10.9"	5	8	1.575	70	18.40	Included 1.5mm underlayer
07	305x110Dmm 12"x24"	5	10	1.861	65	19.50	Included 1.5mm underlayer
08	1220x150mm 48.03"x5.91"	6	8	1.464	72	18.44	Included 1.5mm underlayer
09	122Dx150mm 48.03"x5.91"	6	10	1.930	72	22.79	No underlayer
10	122Dx180mm 48.03"x10.9"	6	8	1.760	70	22.13	Included 1.5mm underlayer

Pre-attached padding option: 1.0mm & 1.5mm IXPE.

If your requested size is not on above list, we can do OEM size for you.



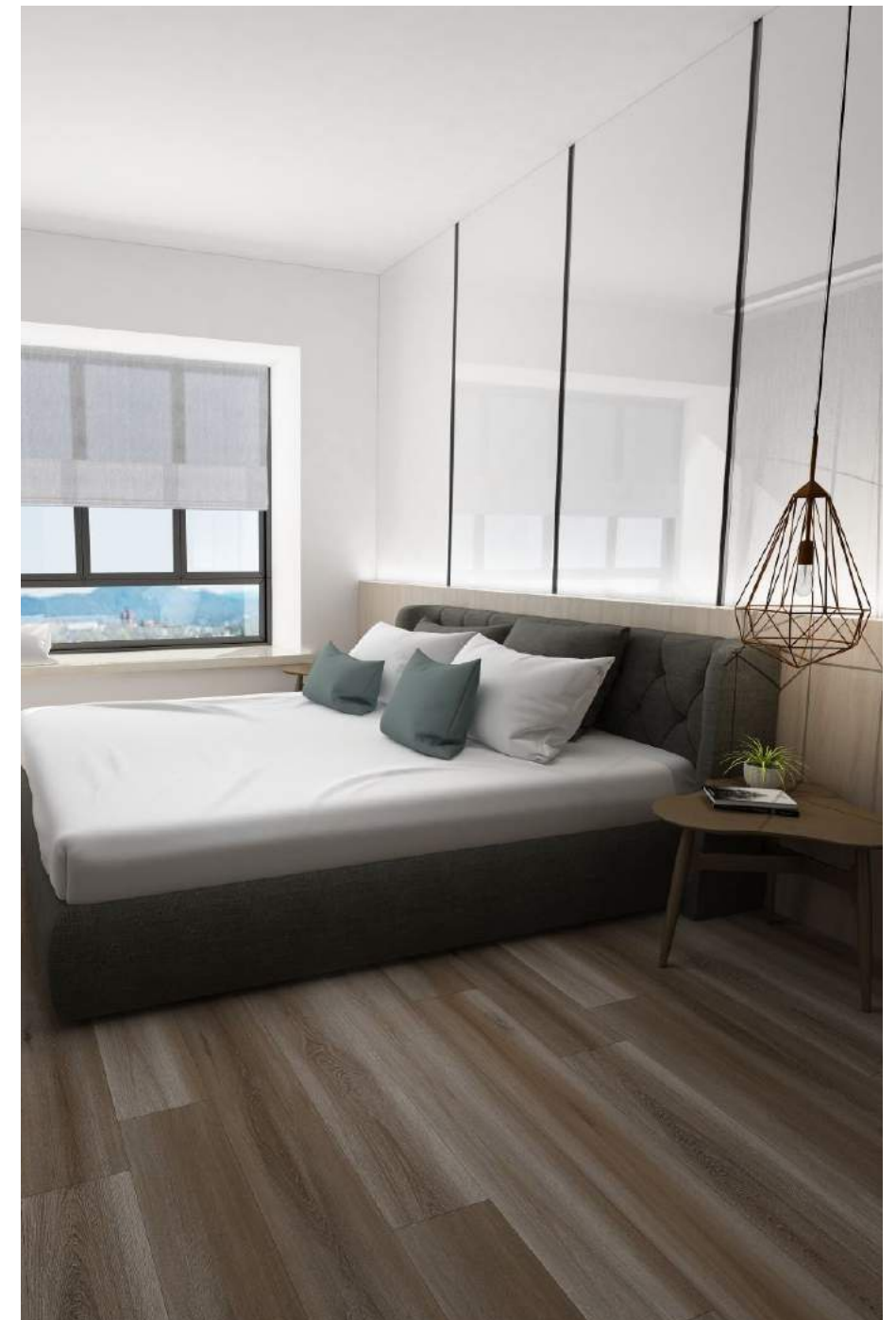


Wood - look SPC flooring



V 403
Flooring size: 1220 x 150mm

* Due to printing technology restrictions, actual images and colors may differ from the images and colors shown in this publication*



V 404
Flooring size: 1220 x 150mm

* Due to printing technology restrictions, actual images and colors may differ from the images and colors shown in this publication*

Wood - look SPC flooring



V 406

Flooring size: 1220 x 150mm

* Due to printing technology restrictions, actual images and colors may differ from the images and colors shown in this publication*



V 409

Flooring size: 1220 x 150mm

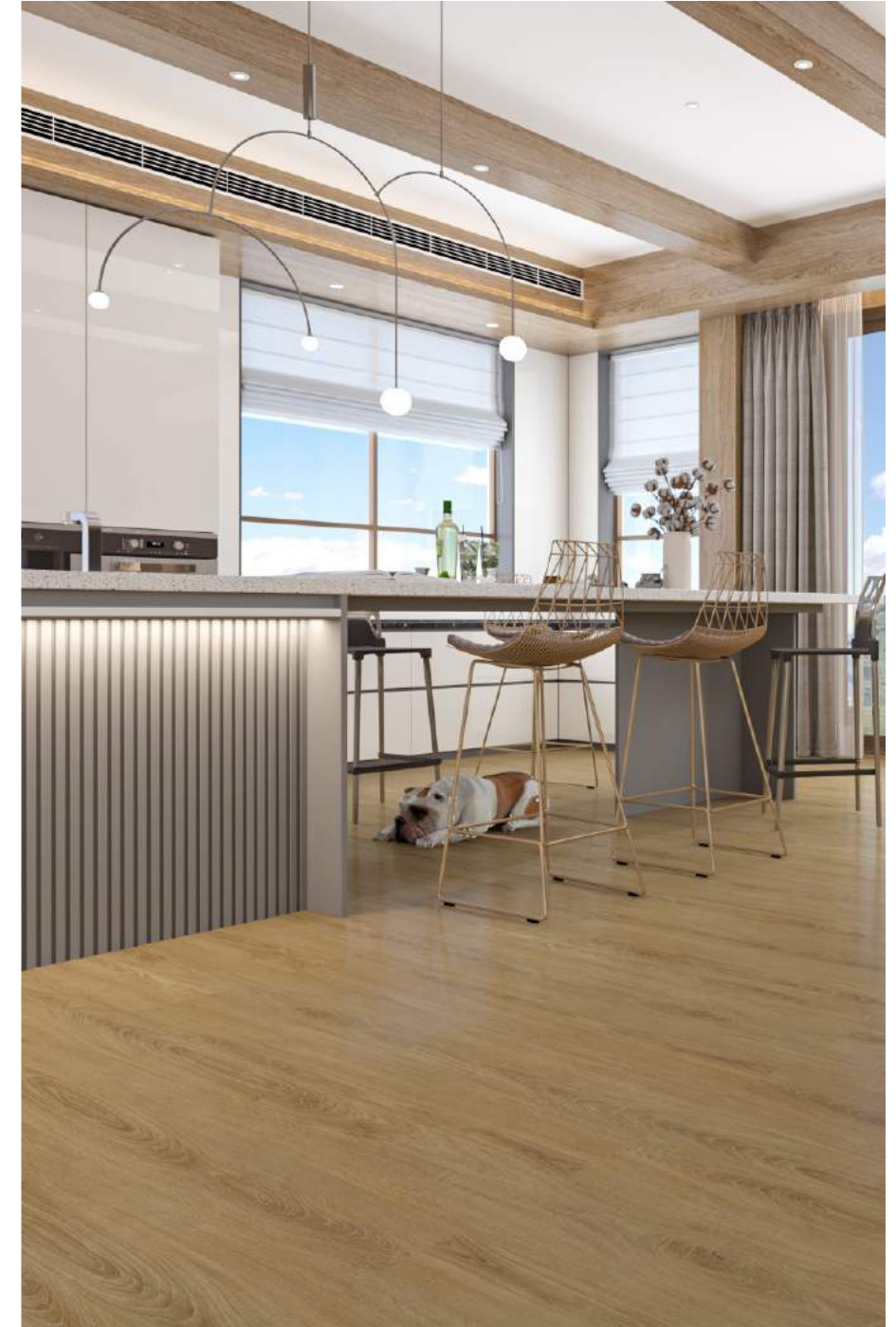
* Due to printing technology restrictions, actual images and colors may differ from the images and colors shown in this publication*

Wood - look SPC flooring



VP 410

Flooring size: 1220 x 150mm



VP 412

Flooring size: 1220 x 180mm

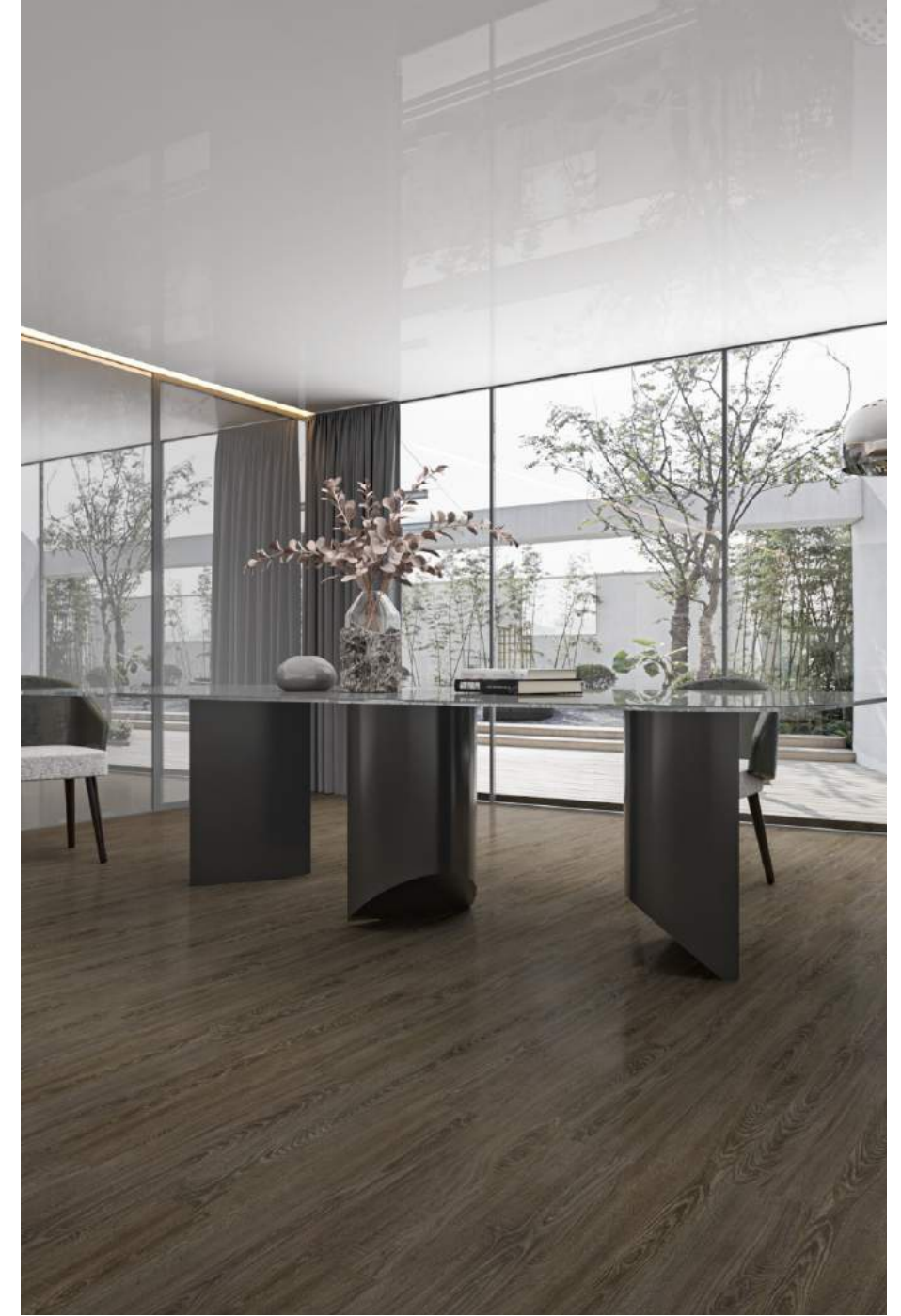
Wood - look SPC flooring



VP 414

Flooring size: 1220 x 180mm

* Due to printing technology restrictions, actual images and colors may differ from the images and colors shown in this publication*



VP 415

Flooring size: 1220 x 180mm

* Due to printing technology restrictions, actual images and colors may differ from the images and colors shown in this publication*

Wood - look SPC flooring



VF 445-6

Flooring size: 1220 x 150mm



VF 445-5

Flooring size: 1220 x 150mm

Wood - look SPC flooring



LK 461
Flooring size: 1220 x 150mm

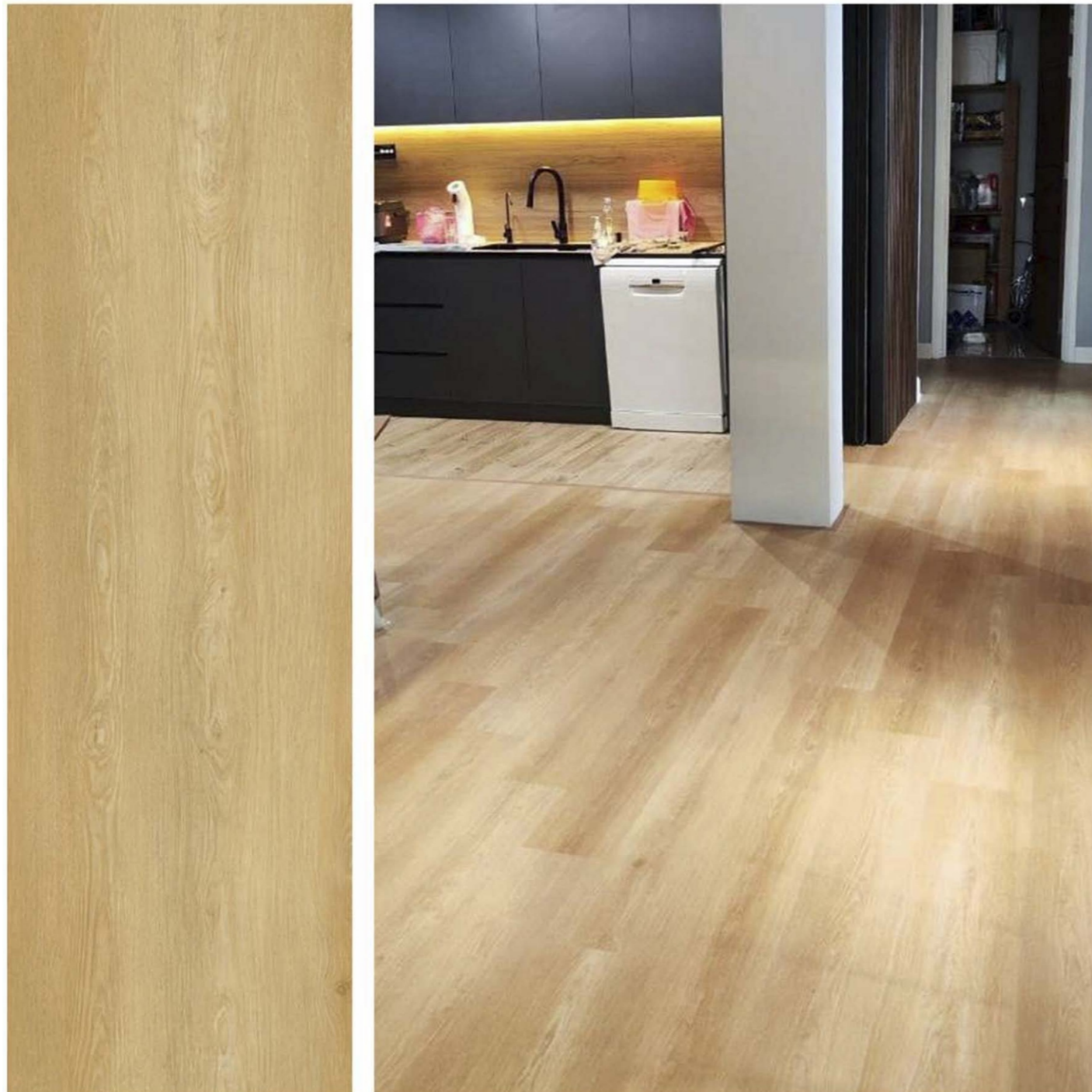


LK 463
Flooring size: 1220 x 150mm

* Due to printing technology restrictions, actual images and colors may differ from the images and colors shown in this publication.

* Due to printing technology restrictions, actual images and colors may differ from the images and colors shown in this publication.

Wood - look SPC flooring



VF 416

Flooring size: 1220 x 150mm



VF 420

Flooring size: 1220 x 180mm



VF 421

Flooring size: 1220 x 180mm

Wood - look SPC flooring



VF 422
Flooring size: 1220 x 180mm



VF 423
Flooring size: 1220 x 180mm



VF 501
Flooring size: 600 x 126mm

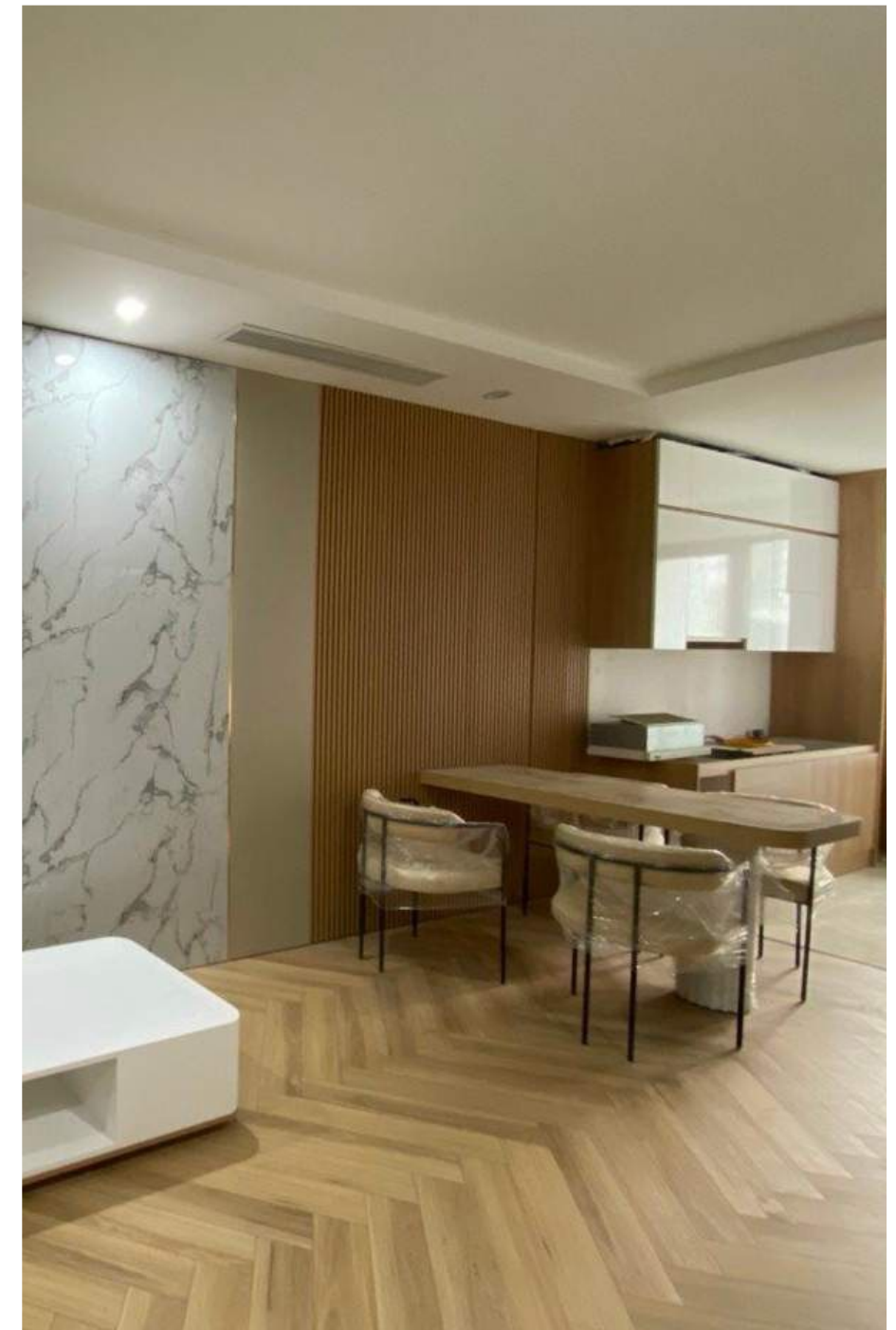


Wood - look SPC flooring



VF 502

Flooring size: 600 x 126mm



VF 503

Flooring size: 600 x 126mm

Wood - look SPC flooring



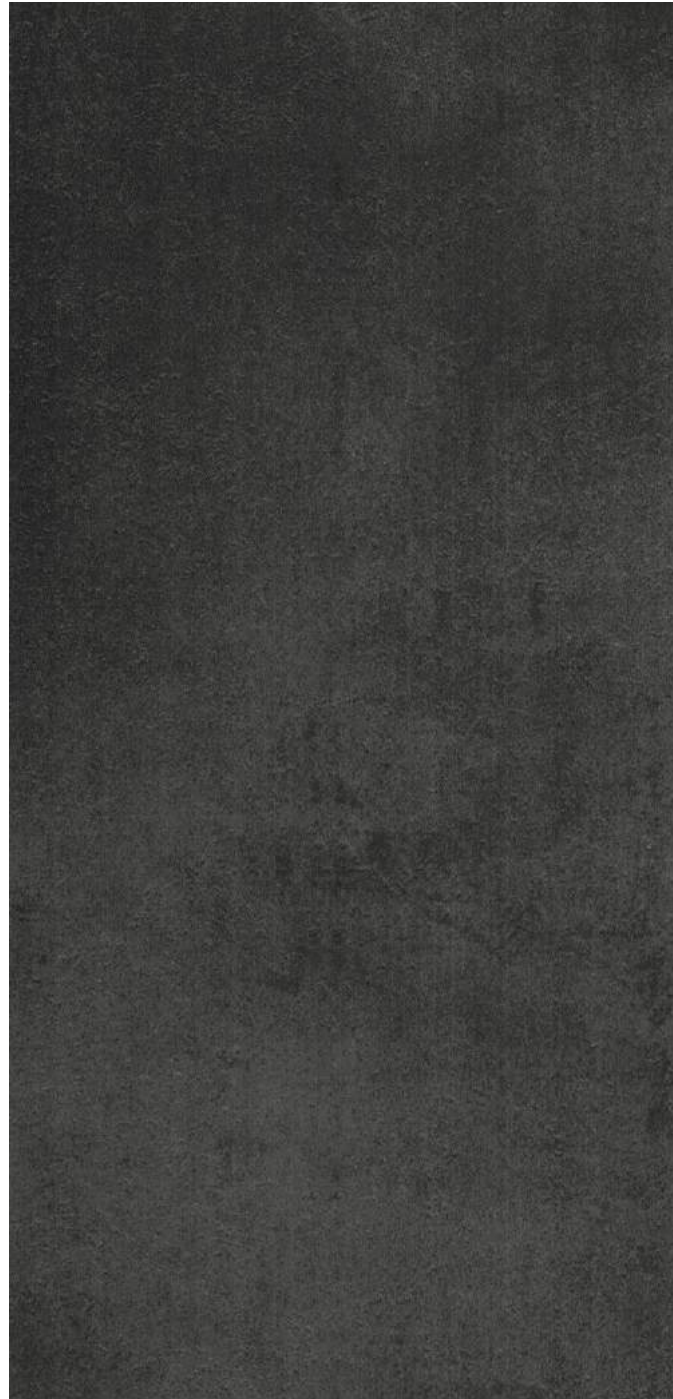
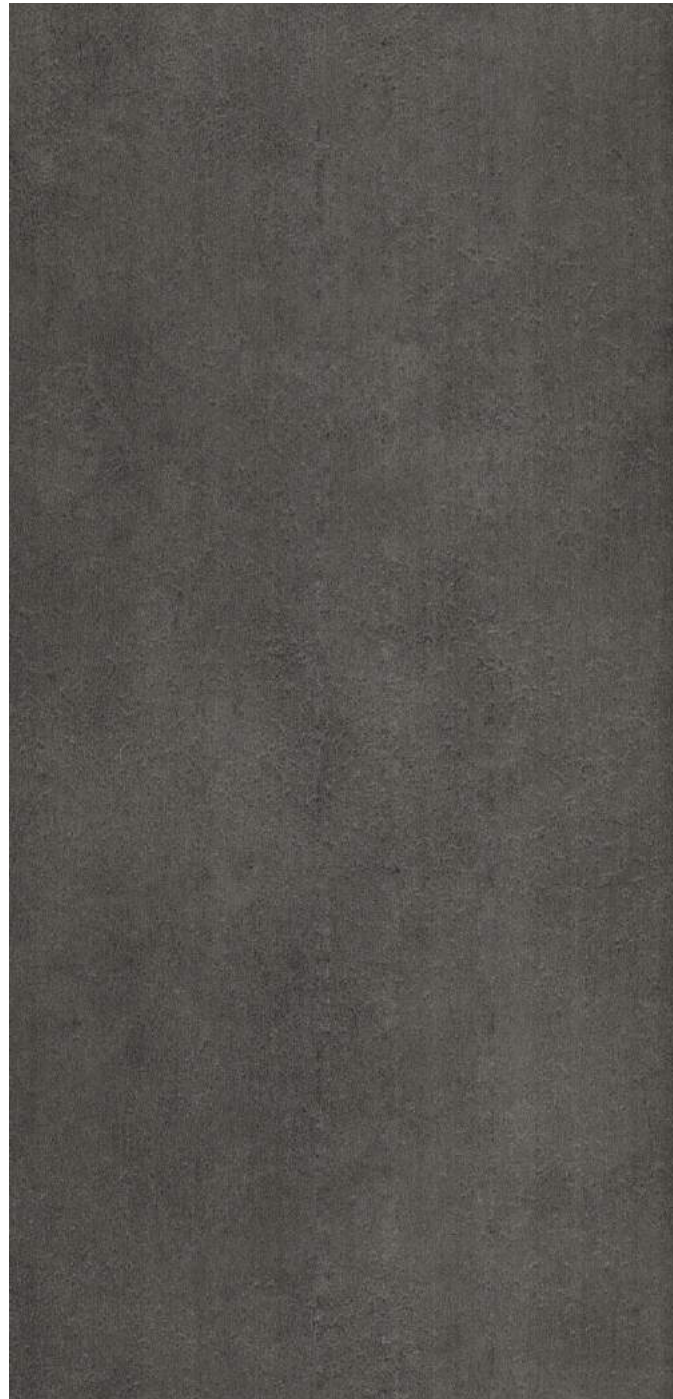
VF 504
Flooring size: 600 x 126mm

* Due to printing technology restrictions, actual images and colors may differ from the images and colors shown in this publication.

* Due to printing technology restrictions, actual images and colors may differ from the images and colors shown in this publication.



Wood look SPC flooring



S01
Flooring size: 305 x 610mm

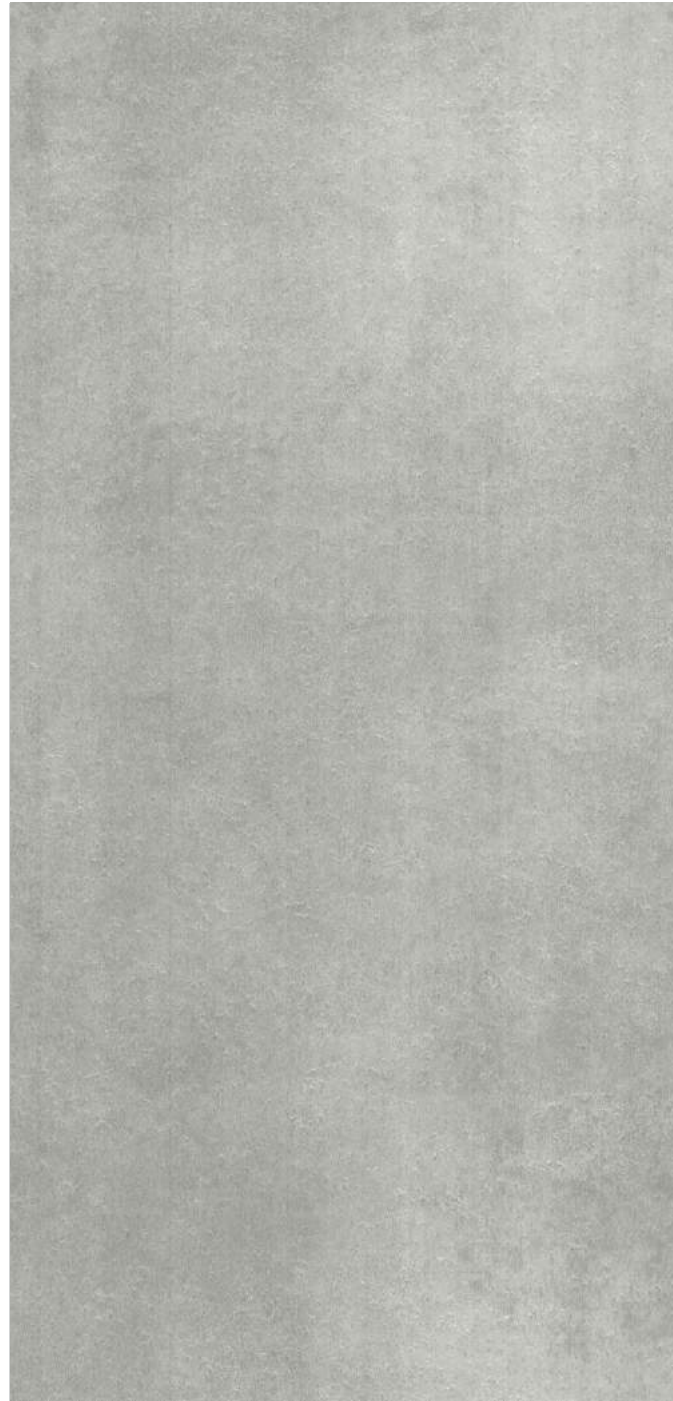
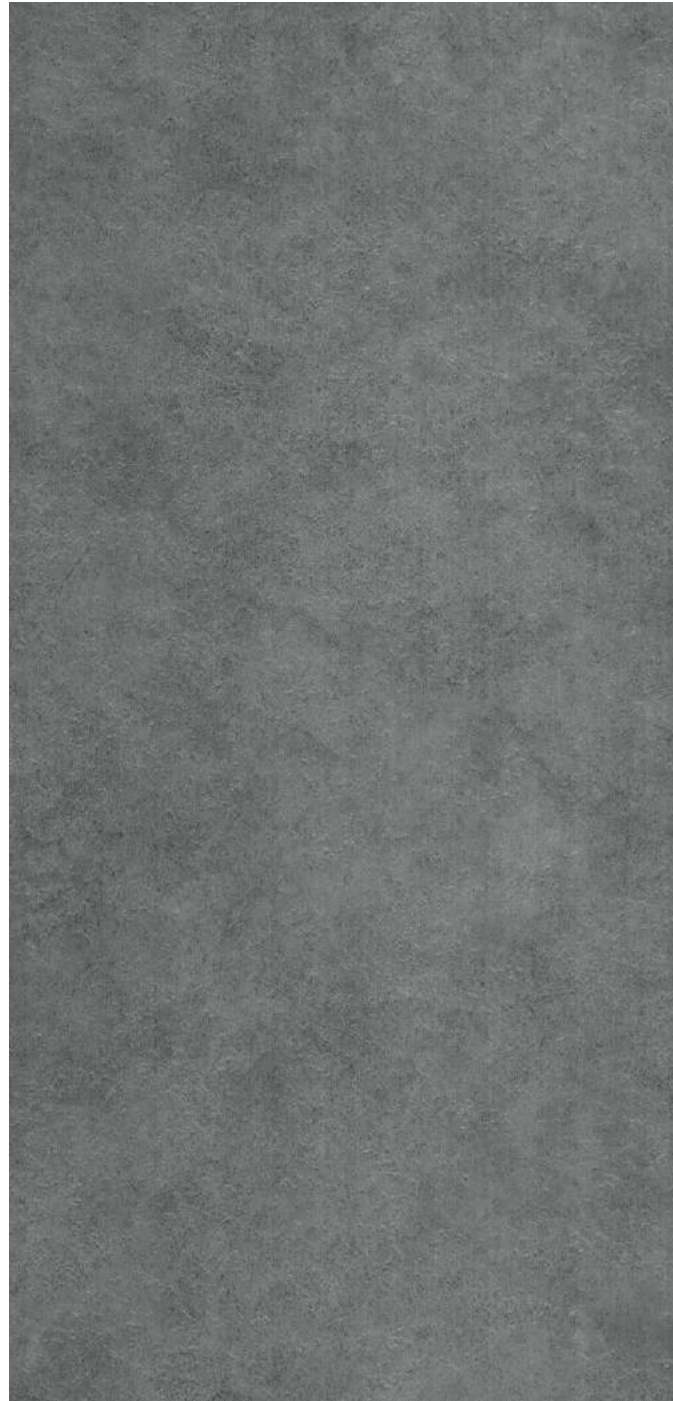
S02
Flooring size: 305 x 610mm



* Due to printing technology restrictions, actual images and colors may differ from the images and colors shown in this publication.

* Due to printing technology restrictions, actual images and colors may differ from the images and colors shown in this publication.

Wood look SPC flooring



S03
Flooring size: 305 x 610mm

S04
Flooring size: 305 x 610mm





V403



V404



V406



V409



V410



VF 412



VF 413



VF 420



VF 421



VF 422



VF 423



AUSTRALIAN SPOTTED GUM NP1205



BLACK BUTT NP1206



CATALINA



DFS 02



FC 101



VF 458-3



FC 642A



FC 2519



VF 463



FOOTHILLS FOG 350-014



KTV 1081



KTV 1082



NEWPORT GLACIER 350-004



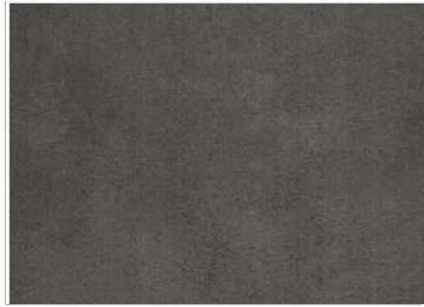
KTV 1086



KTV 1087



MOCA FRESNO



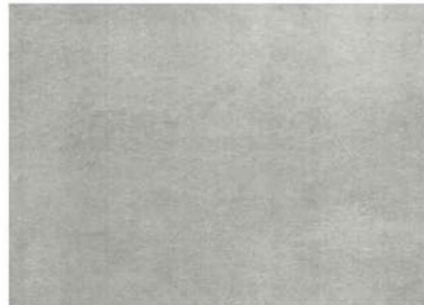
S01



S02



S03



S04



VFS09



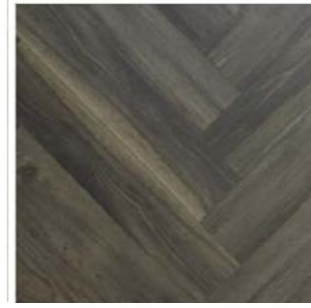
VF 501



VF 502



VF 503



VF 504



VP412



VP414



VP 415



VP 416









LK460









LK461




LK463




	T-Profile					
	Size (mm): 2700					
	NT 05					







	F-Profile					
	Size (mm): 2700					
	NF 05					







	L-Profile					
	Size (mm): 2700					
	NL 05					

	Skirting					
	Size (mm): 2440					
	P 05					

	Conner Skirting					
	Size (mm): 2400					
	QR 05					

	Conner Skirting					
	Size (mm): 2400					
	PG 05					

	Stair Nose					
	Size (mm): 2400					
	SN 05					

	W Skirting					
	Size (mm): 2400					
	PW 05					

